



# BENTZ BOATS

613 BRYDEN AVE. #394  
Lewiston ID. 83501  
Phone: (208) 746-7035  
Fax: (208) 750-0037  
bentzboats@bentzboats.com  
www.bentzboats.com

Darell Bentz President

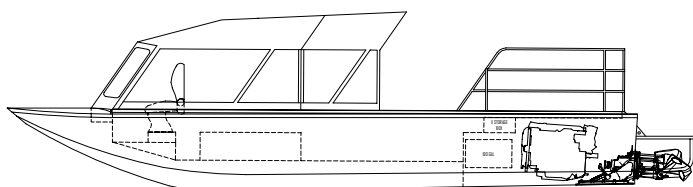
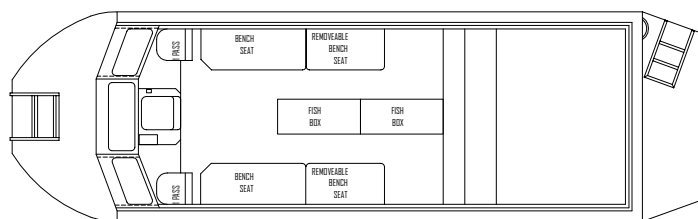
Plant Location – 155 Southport



## Idaho Power 30' Twin Diesel

Idaho Power's work requires that they continually perform water testing, fisheries studies and river mapping predominantly within the upper reaches of Hell's Canyon, some of the toughest whitewater found anywhere in the world.

The 30' twin is powered by Yanmar 6LP-STP, 315 hp diesel engines and coupled to Hamilton 241s with 4.0 turbo impellers. This power package gives them tremendous thrust capabilities to handle the widely fluctuating river conditions they encounter plus superior fuel economy for the extended work trips that they perform. A multiple of specialty items were incorporated into the boat in order to perform their work requirements. Items include a battery bank system and inverter with GFCl outlets throughout the boat to power computer and telemetry equipment, specialized work stations, removable soft top section from hardtop, stainless steel bow wrap and stomp grates to remove vegetative matter that can be encountered.



Bentz Boats has set the standard for quality and innovation for over 35 years. Since our 1st aluminum jetboat boat built in 1970 we have developed superior quality, efficient and agile handling boats. Through years of personal and commercial use, customer feedback and innovative designs, Bentz Boats has acquired a domestic and international clientele not only for our superior boat design but also our commitment to quality. Attention to detail and a high quality build standard makes Bentz Boats extremely tough with a high degree of impact resistance and helps ensure that each boat operates with a minimum of maintenance.

Bentz pioneered features include the sled shaped bow, forward and center pilot station, short stroke mechanical stick steering and delta pad bottom. These features contribute to our boats' superior handling, quick planing and shallow running capabilities.

## SPECIFICATIONS

**Owner:** Idaho Power  
Private

**Home Port:** Boise, Idaho

**Designer:** Darell Bentz

**Builder:** Bentz Boats, LLC

**Construction Material:** Aluminum

**Length:** 30'-0"

**Bottom:** 8'

**Beam:** 10'

**Draught:** 8"

**Engines:** 2-Yanmar 6LP-STP

**Jet Units:** 2-241 Hamilton Jet

**Impellers:** 4.0 Turbo Impellers

**Maximum Speed:** ~ 55 mph

**Cruising Speed:** ~ 35 mph

**Fuel:** 190 Gallon Gas

**Range:** 650 Miles

*Often Imitated, Never Duplicated  
Nobody Knows Aluminum Jet Boats and Rivers Like Bentz Boats*

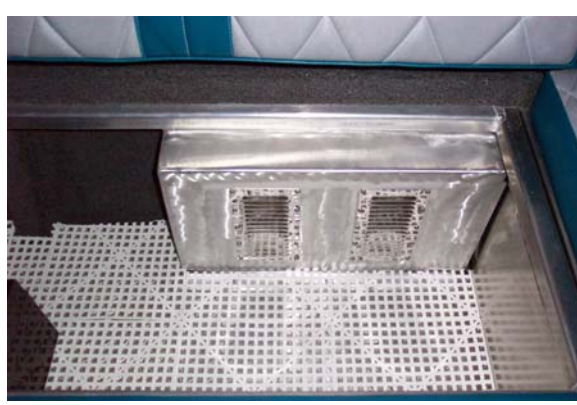
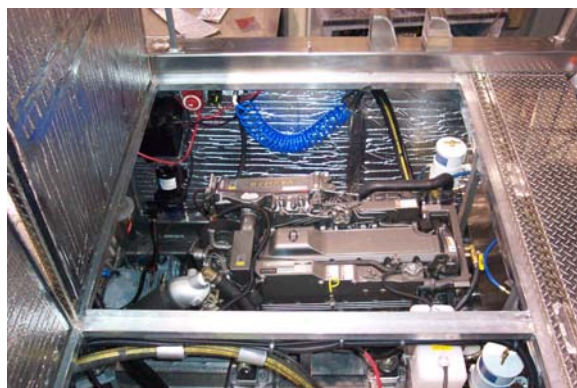


# BENTZ BOATS

613 BRYDEN AVE. #394  
Lewiston ID. 83501  
Phone: (208) 746-7035  
Fax: (208) 750-0037  
bentzboats@bentzboats.com  
www.bentzboats.com

Darell Bentz President

Plant Location – 155 Southport



*Often Imitated, Never Duplicated  
Nobody Knows Aluminum Jet Boats and Rivers Like Bentz Boats*