



BENTZ BOATS

613 BRYDEN AVE. #394
Lewiston ID. 83501
Phone: (208) 746-7035
Fax: (208) 750-0037
bentzboats@bentzboats.com
www.bentzboats.com

Plant Location - 155 Southport



Horn 28' "M/V Lewiston"

The "Lewiston" was specifically designed for the open waters of the Arctic in the Beaufort Sea and local rivers such as the Coppermine. The vessels design was to allow for the Horn's to comfortably live on board for extended overnight trips. Features include a refrigerator, diesel cooktop, auxiliary diesel heater, sink, long counter top and lots of cupboard storage. The single bench seat makes into a 54" wide bed. Additional items include a full electronics package, solar panel to supplement the 8D house battery, extended high deck with storage over the fuel cell and AK bulkhead with sliding door.

Bentz Boats has set the standard for quality and innovation for over 40 years. Since our 1st aluminum jetboat boat built in 1970 we have developed superior quality, efficient and agile handling boats. Through years of personal and commercial use, customer feedback and innovative designs, Bentz Boats has acquired a domestic and international clientele not only for our superior boat design but also our commitment to quality. Attention to detail and a high quality build standard makes Bentz Boats extremely tough with a high degree of impact resistance and helps ensure that each boat operates with a minimum of maintenance.

Bentz pioneered features include the sled shaped bow, forward and center pilot station, short stroke mechanical stick steering and delta pad bottom. These features contribute to our boats's superior handling, quick planing and shallow running capabilities.

SPECIFICATIONS

Owner: Kerry & Irene Horn

Home Port: Kugluktuk, Northwest Terr.

Designer: Bryan Bentz

Builder: Bentz Boats, LLC

Construction Material: Aluminum

Length: 28'-0"

Bottom: 7.5'

Beam: 9.5'

Engines: 2-Yanmar 6LP, 315 hp

Jet Units: 2-Hamilton 213

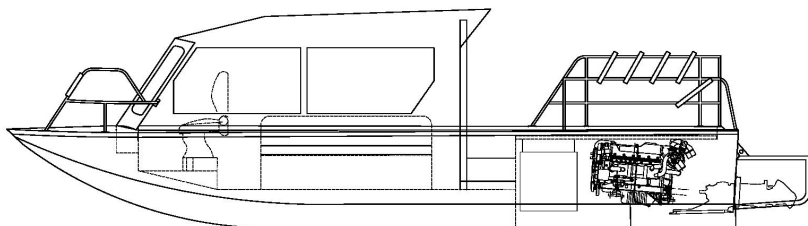
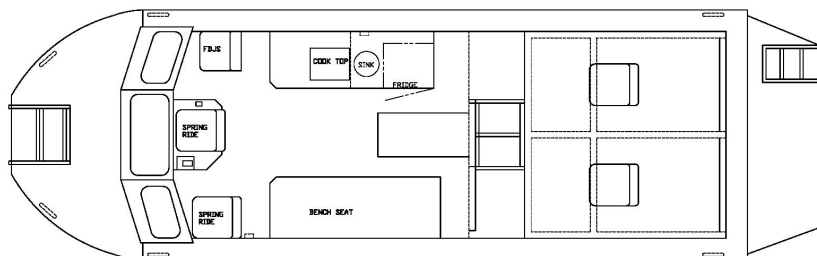
Impeller: 3.4Kw turbo

Maximum Speed: ~ 45 knots

Cruising Speed: ~ 30-35 knots

Fuel: 200 Gallon Diesel

Range: ~400 miles



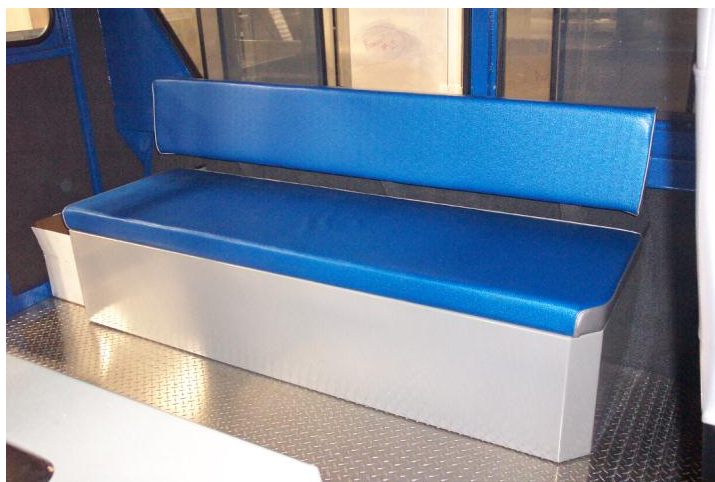
Often Imitated, Never Duplicated



BENTZ BOATS

613 BRYDEN AVE. #394
Lewiston ID. 83501
Phone: (208) 746-7035
Fax: (208) 750-0037
bentzboats@bentzboats.com
www.bentzboats.com

Plant Location - 155 Southport



Often Imitated, Never Duplicated