



# BENTZ BOATS

613 BRYDEN AVE. #394  
Lewiston ID. 83501  
Phone: (208) 746-7035  
Fax: (208) 750-0037  
bentzboats@bentzboats.com  
www.bentzboats.com

Darell Bentz President

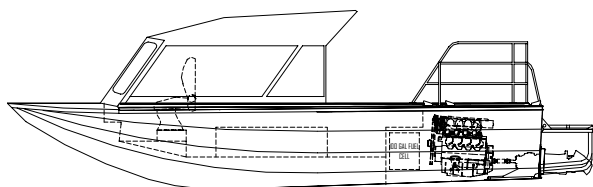
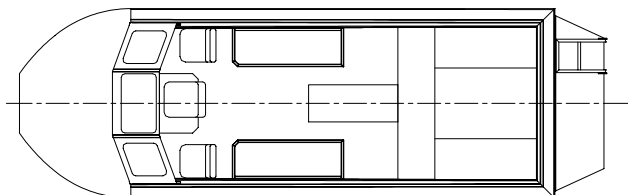
Plant Location – 155 Southport



## Todd Gallup

Todd Gallup of Nampa, Idaho wanted a boat that he and his family could safely enjoy running local whitewater, camping or water skiing.

Todd's boat is powered by a custom 460 built by Mike Herring of Valley Crankshaft coupled to Hamilton's 241 jet unit with a turbo impeller. Standard features include a pilot air ride seat with a small passenger spring ride seat and a jump seat on either side, bench seats with backrests, top trays, fish box, heater, pilot and passenger pantograph wipers, full instrumentation, removable rear rails, dome lights and Coast Guard approved running and navigation lights. Extra's include tinted sliding side windows, stereo and speaker package, watertight cross storage box, custom seat and water ski pull integrated into the transom, bow ladder with bow chalk and cleat plus diamond tread floors with removable snap in carpet inserts.



Bentz Boats has set the standard for quality and innovation for over 35 years. Since our 1st aluminum jetboat built in 1970 we have developed superior quality, efficient and agile handling boats. Through years of personal and commercial use, customer feedback and innovative designs, Bentz Boats has acquired a domestic and international clientele not only for our superior boat design but also our commitment to quality. Attention to detail and a high quality build standard makes Bentz Boats extremely tough with a high degree of impact resistance and helps ensure that each boat operates with a minimum of maintenance.

Bentz pioneered features include the sled shaped bow, forward and center pilot station, short stroke mechanical stick steering and delta pad bottom. These features contribute to our boats' superior handling, quick planing and shallow running capabilities.

## ***SPECIFICATIONS***

**Owner:** Todd Gallup  
Private, Recreational  
**Home Port:** Nampa, Idaho  
**Designer:** Darell Bentz  
**Builder:** Bentz Boats, LLC  
**Construction Material:** Aluminum  
**Length:** 24'-0"  
**Bottom:** 7'  
**Beam:** 9'  
**Draught:** 6"  
**Engines:** 1-Custom 460  
**Jet Units:** 1-241 Hamilton Jet  
**Impellers:** 4.4 Turbo Impeller  
**Maximum Speed:** ~ 45 mph  
**Cruising Speed:** ~ 30 mph  
**Fuel:** 100 Gallon Gas  
**Range:** 250 Miles

*Often Imitated, Never Duplicated  
Nobody Knows Aluminum Jet Boats and Rivers Like Bentz Boats*



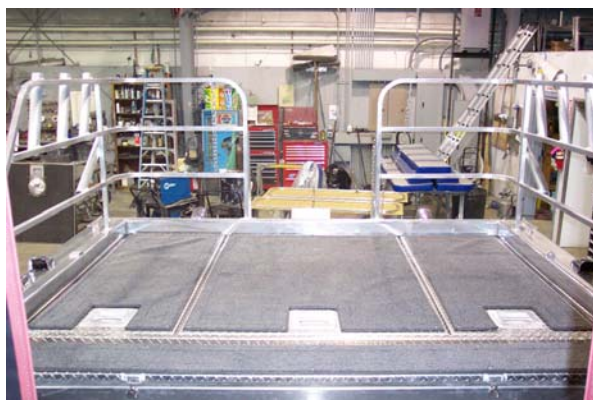


# BENTZ BOATS

613 BRYDEN AVE. #394  
Lewiston ID. 83501  
Phone: (208) 746-7035  
Fax: (208) 750-0037  
bentzboats@bentzboats.com  
www.bentzboats.com

Darell Bentz President

Plant Location – 155 Southport



*Often Imitated, Never Duplicated  
Nobody Knows Aluminum Jet Boats and Rivers Like Bentz Boats*