

BENTZ BOATS

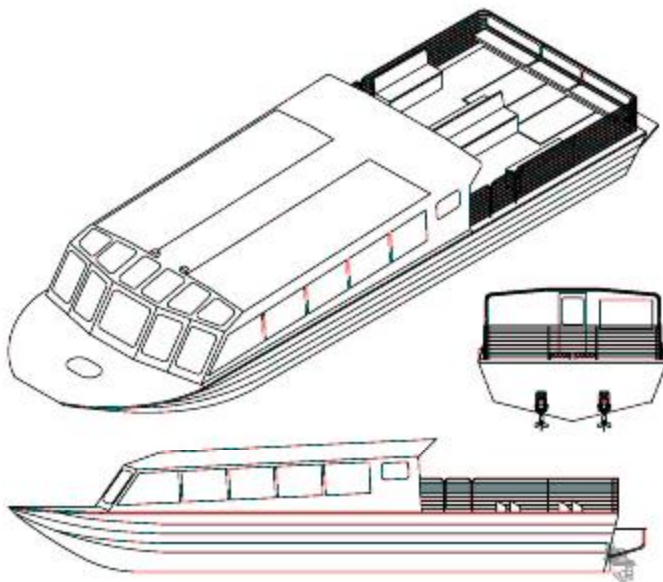
613 BRYDEN AVE. #394
Lewiston ID. 83501
Phone: (208) 746-7035
Fax: (208) 750-0037
bentzboats@bentzboats.com
www.bentzboats.com

Plant Location - 155 Southport



Gates of the Mountains "Canyon Voyager"

The "Canyon Voyager" was specifically designed for the Missouri River waters near Helena, Montana and the viewing opportunities in the area. Twin 230hp Cummins diesel engines coupled to Konrad stern drives produced the intended 8 knot cruise with full passenger weights and fuel. Features include bus style seating, abundant viewing windows including overhead, air conditioning system, spacious on board head, open aft deck with passenger seating and numerous speakers placed throughout the boat for the PA and stereo systems. Vessel was built to ABS aluminum standards and has fire fighting and bilge de-watering systems.



Bentz Boats has set the standard for quality and innovation for over 35 years. Since our 1st aluminum jetboat boat built in 1970 we have developed superior quality, efficient and agile handling boats. Through years of personal and commercial use, customer feedback and innovative designs, Bentz Boats has acquired a domestic and international clientele not only for our superior boat design but also our commitment to quality. Attention to detail and a high quality build standard makes Bentz Boats extremely tough with a high degree of impact resistance and helps ensure that each boat operates with a minimum of maintenance.

Bentz pioneered features include the sled shaped bow, forward and center pilot station, short stroke mechanical stick steering and delta pad bottom. These features contribute to our boats's superior handling, quick planing and shallow running capabilities.

SPECIFICATIONS

Owner: Gates of the Mountains

Home Port: Helena, MT

Designer: Bryan Bentz

Builder: Bentz Boats, LLC

Construction Material: Aluminum

Length: 60'-0"

Bottom: 16'

Beam: 18.5'

Engines: 2-Cummins QSB5.9, 230 hp
2-Konrad Stern Drives

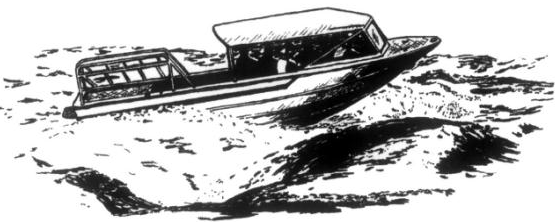
Maximum Speed: ~ 12 knots

Cruising Speed: ~ 8 knots

Fuel: 100 Gallon Diesel

Certified: 103 passenger, 2 crew,
Inland Water

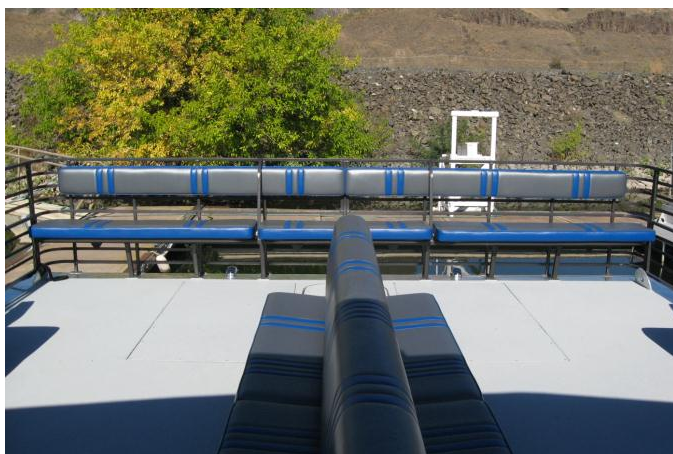
Often Imitated, Never Duplicated



BENTZ BOATS

613 BRYDEN AVE. #394
Lewiston ID. 83501
Phone: (208) 746-7035
Fax: (208) 750-0037
bentzboats@bentzboats.com
www.bentzboats.com

Plant Location - 155 Southport



Often Imitated, Never Duplicated