



BENTZ BOATS

613 BRYDEN AVE. #394
Lewiston ID. 83501
Phone: (208) 746-7035
Fax: (208) 750-0037
bentzboats@bentzboats.com
www.bentzboats.com

Darell Bentz President

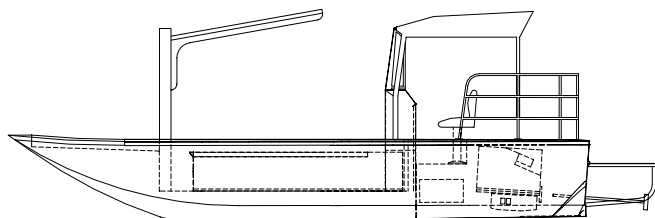
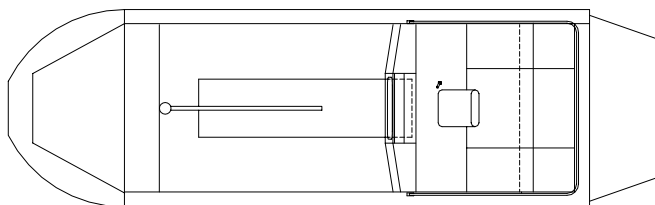
Plant Location – 155 Southport



Idaho Power 25' Fisheries

Idaho Power's work requires that they continually perform water testing, fisheries studies and river mapping predominantly throughout the upper reaches of the Snake River

The 25' single is powered by a Kodiak Marine 8.1L, 390 hp gas engine coupled to a Hamilton 241 with 4.0 turbo impeller. This specialty boat was designed to predominantly perform fisheries work including transport of adult sturgeon. With a 9' long removable sturgeon tank and overhead hoist system the boat is capable of safely transporting these fish during fisheries work. Specialty items include an onboard water system with multiple outlet ports, battery bank with inverter system to provide needed onboard power, multi-level work deck spaces, considerable equipment storage throughout the boat and an removable cabin for varying weather conditions. Also incorporated was a stainless steel stomp grate, stainless steel bow wrap and multi location cleats.



Bentz Boats has set the standard for quality and innovation for over 35 years. Since our 1st aluminum jetboat boat built in 1970 we have developed superior quality, efficient and agile handling boats. Through years of personal and commercial use, customer feedback and innovative designs, Bentz Boats has acquired a domestic and international clientele not only for our superior boat design but also our commitment to quality. Attention to detail and a high quality build standard makes Bentz Boats extremely tough with a high degree of impact resistance and helps ensure that each boat operates with a minimum of maintenance.

Bentz pioneered features include the sled shaped bow, forward and center pilot station, short stroke mechanical stick steering and delta pad bottom. These features contribute to our boats' superior handling, quick planing and shallow running capabilities.

SPECIFICATIONS

Owner: Idaho Power
Private

Home Port: Boise, Idaho

Designer: Darell Bentz

Builder: Bentz Boats, LLC

Construction Material: Aluminum

Length: 25'-0"

Bottom: 7'

Beam: 8.5'

Draught: 6"

Engines: 1-Kodiak Marine 8.1L

Jet Units: 1-241 Hamilton Jet

Impellers: 4.0 Turbo Impellers

Maximum Speed: ~ 45 mph

Cruising Speed: ~ 30 mph

Fuel: 80 Gallon Gas

Range: 200 Miles

*Often Imitated, Never Duplicated
Nobody Knows Aluminum Jet Boats and Rivers Like Bentz Boats*



BENTZ BOATS

613 BRYDEN AVE. #394
Lewiston ID. 83501
Phone: (208) 746-7035
Fax: (208) 750-0037
bentzboats@bentzboats.com
www.bentzboats.com

Darell Bentz President

Plant Location – 155 Southport



*Often Imitated, Never Duplicated
Nobody Knows Aluminum Jet Boats and Rivers Like Bentz Boats*